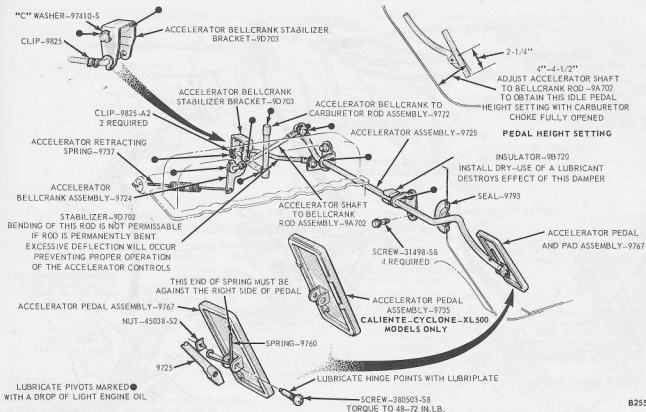


B2557-A

FIG. 25—Throttle Linkage Adjustment—Mustang Six



B2558-A

FIG. 26—Throttle Linkage Adjustment—Falcon, Comet and Fairlane Six

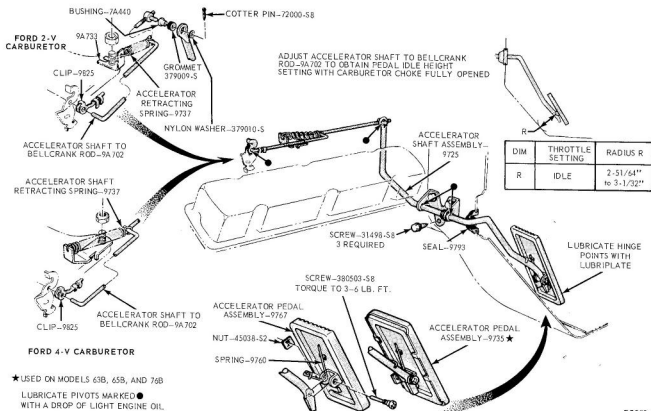
All Models Except Mustang Six  
Refer to Figs. 26 through 30 for views of the accelerator linkage and

the accelerator pedal specified idle height for the applicable car model(s):

1. Adjust the idle (hot engine)

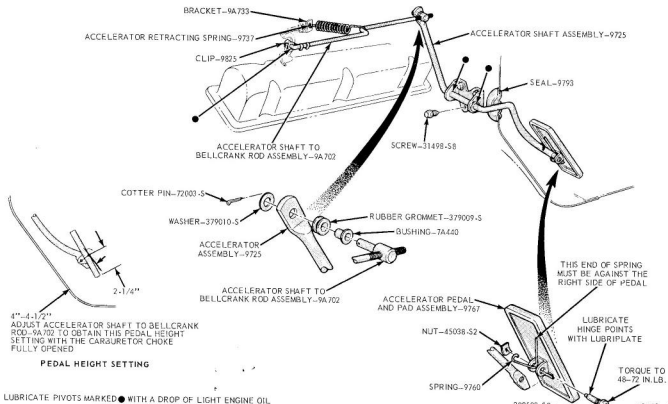
speed (Part 10-1, Section 2) to specification (Part 10-8), if required.

2. With the engine stopped, make



B2559-A

FIG. 27—Throttle Linkage Adjustment—Mustang V-8



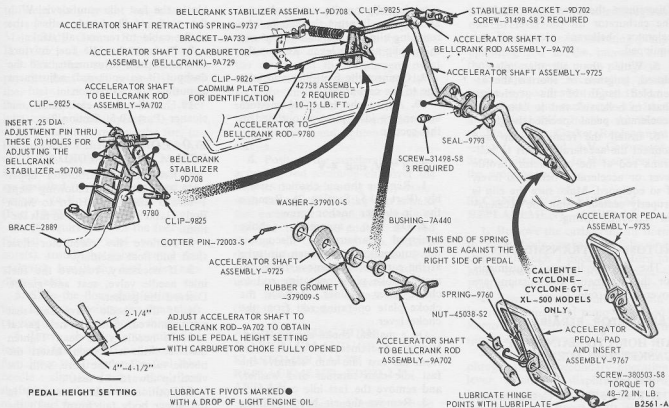
B2560-A

FIG. 28—Throttle Linkage Adjustment—Falcon V-8

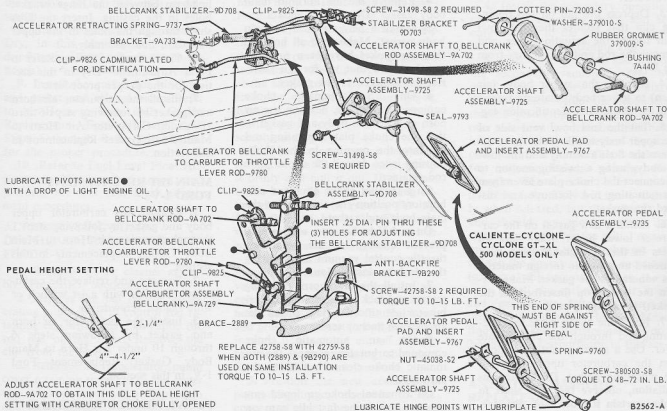
sure the carburetor choke plate is fully opened and the throttle plate(s)

is closed. Be sure the fast idle cam is not contacting the fast idle screw.

3. Check the accelerator pedal for the specified idle height. Make sure



**FIG. 29—Throttle Linkage Adjustment—Fairlane and Comet 289 V-8**



**FIG. 30—Throttle Linkage Adjustment—Fairlane and Comet 390 V-8**

the floor mat is properly positioned when performing this operation.

4. If the pedal height requires adjustment, disconnect the accelerator

retracting spring at the accelerator shaft or bellcrank (if so equipped).